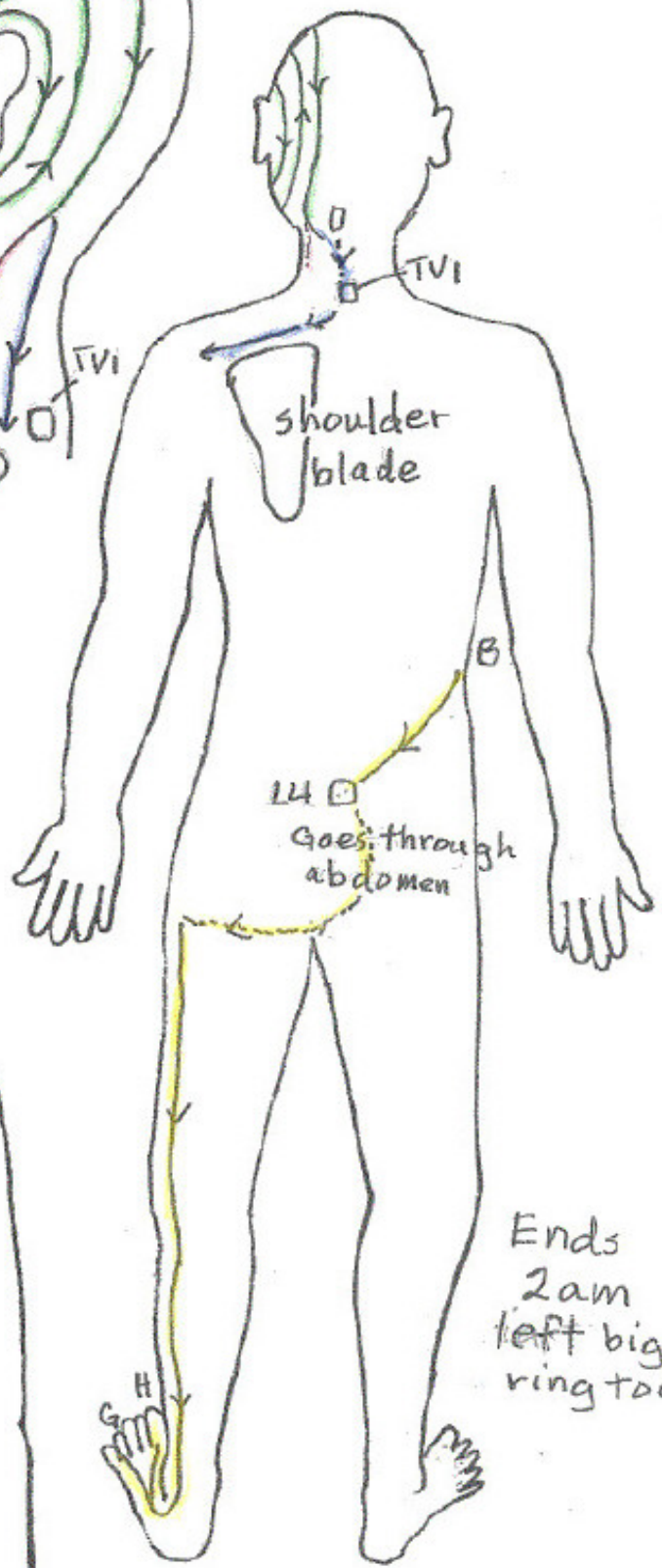
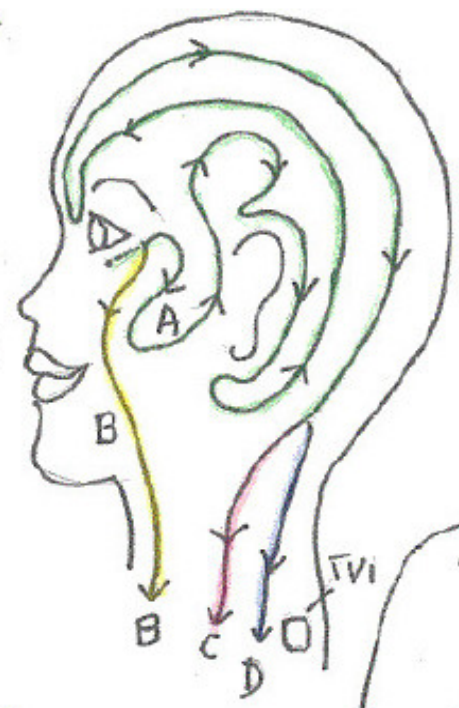
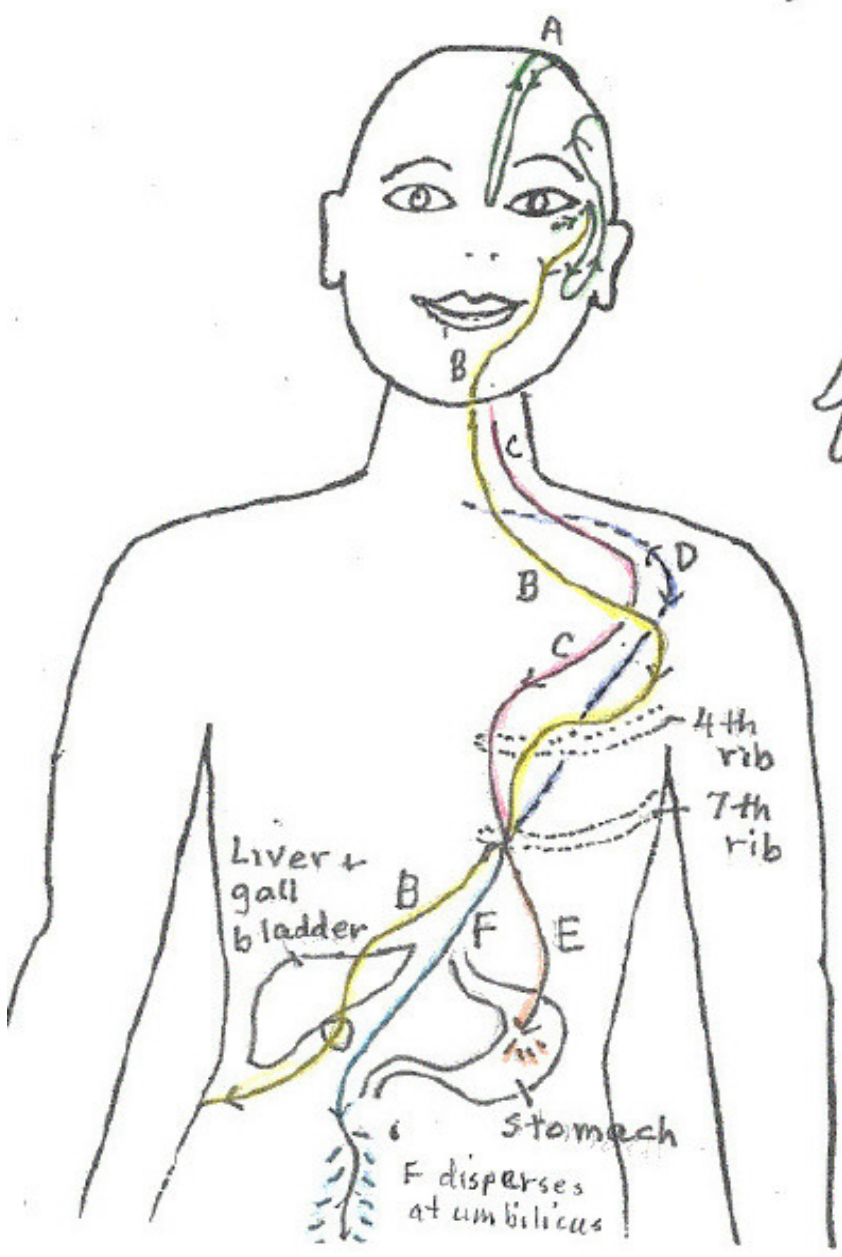


Left Gall Bladder
Developing flow

Begins 12am
midnight outer
corner of left eye



Ends
2am
left big +
ring toes



Betty J. Wall
1974

GALL BLADDER DEVELOPING FUNCTION

At 12 midnight the **left** Umbilicus Developing Flow arrives a quarter inch from the outer corner of the left eye and changes into the **left** Gall Bladder Developing Energy Flow and immediately separates into two flows, "A" and "B".

"A" circles the cheek bone, goes up to the temple from the front of the left ear, circles the ear one quarter inch above the hair line, that is to say, above the ear in a semi-circle, to bottom of ear (round the inside of the bone below the ear); turns toward the back of the head in a semi-circle, ascends in a half circle to the forehead (front); makes three little turns at the inner corner of the eye (in effect drawing a semi-circle) the third time and at back of head (occipital bone) separates into "C" and "D".

"C" flows directly to the hollow of the subclavian area (front of shoulder and arm joint). Turns and descends in front of the shoulder joint, crosses "B," continues to 7th rib where "C", "B" and "D" merge. "C" and "D" become "E" and "F". "B" continues.

"D" from the first thoracic vertebra flows diagonally to the posterior (back) shoulder blade; descends to the hollow of the subclavian area, comes out to the front of the shoulder and crosses with "B" at the 4th rib and descends. It merges (co-mingles) with "B" at the start of the 7th rib, where they immediately branch into "E" and "F".

"E" flows into the stomach.

"F" flows to the umbilicus and disperses.

"B" descends from the cheek bone to anterior (front) shoulder, descending by the 4th rib, and at 7th rib comes together with "C"/"D", then descends to the abdomen. (From 4th rib, loops to the side, flowing through the 5th/6th ribs and back to the 7th rib. It continues to descend through liver & gall bladder, through right side of the abdomen, around to right edge of lumbar 4, then circulates the interior pelvis, emerges to side of rectum (anus), crosses to left buttock, descends along lateral (outer) seam-side of left leg and into lateral (outer) ankle bone where it separates into "G" and "H".

"G" from inside of the outer (lateral) ankle, immediately proceeds across the top of the foot (instep) to 4th toe.

"H" flows from lateral (outer) ankle diagonally across top of foot to top of big toe, to top of the nail and changes into the **left** Liver Developing Energy Flow at 2 AM.

[Billie Watkins' observation, looking at an acupuncture diagram.] Left GB "B" energy crosses at center 14 and goes to the gall bladder and liver and to right side of 4th lumbar and into abdomen; (the right GB energy flow crosses at center 14 and flows through spleen and pancreas and into left side of lumbar 4 and into abdomen).

The flow that began at the corner of the left eye crosses at center 14, crosses again in the perineum and ends in the left big and 4th toes. The part that goes to the ring toe comes together with Mediator Flow. Harmonizes front to back and side to side with mediator flow. (Ring toe helps through TV-4 any gaseous conditions in body)

The gall bladder flow is the dividing line between the front and back (anterior/posterior) of the body (frontal cut). Main Central is the sagittal cut of the body (sagittal—pertaining to the longitudinal vertical plane that divides the body into left and right halves.)