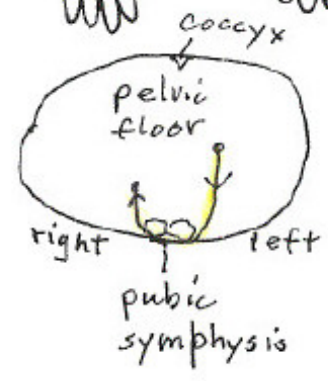
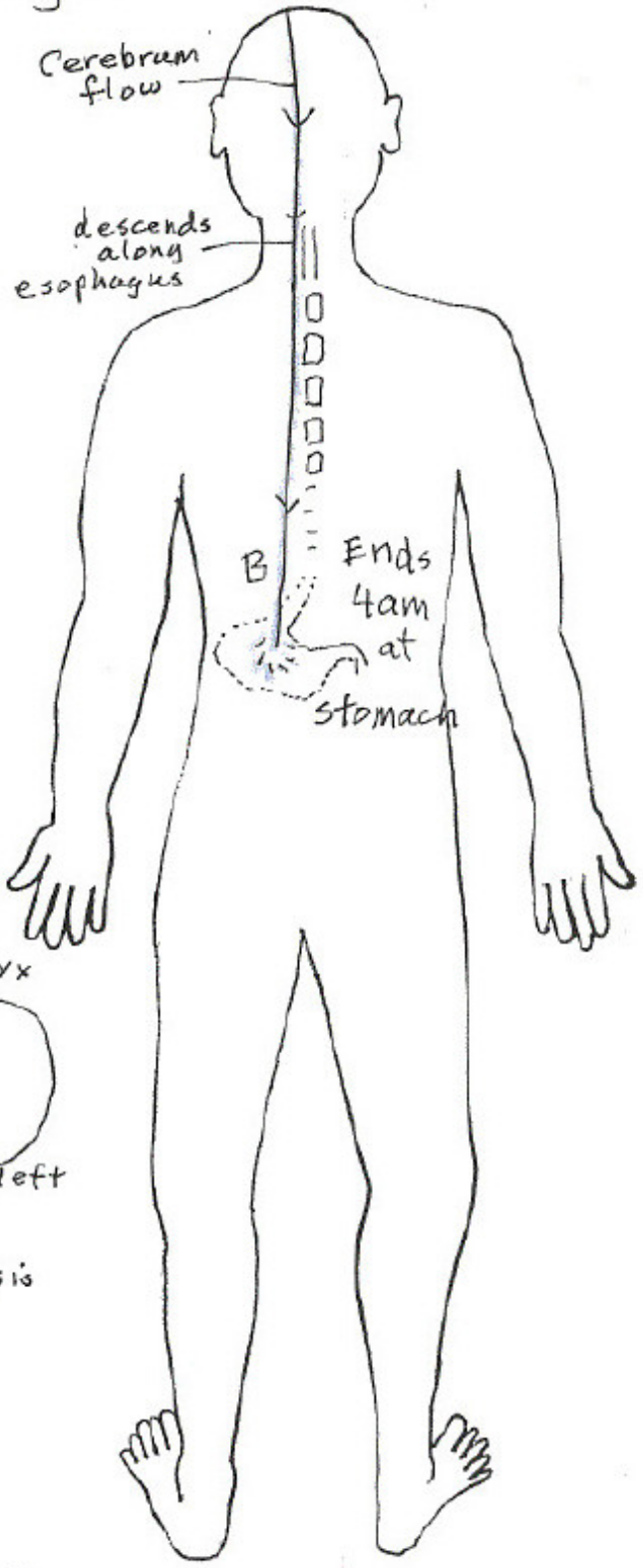
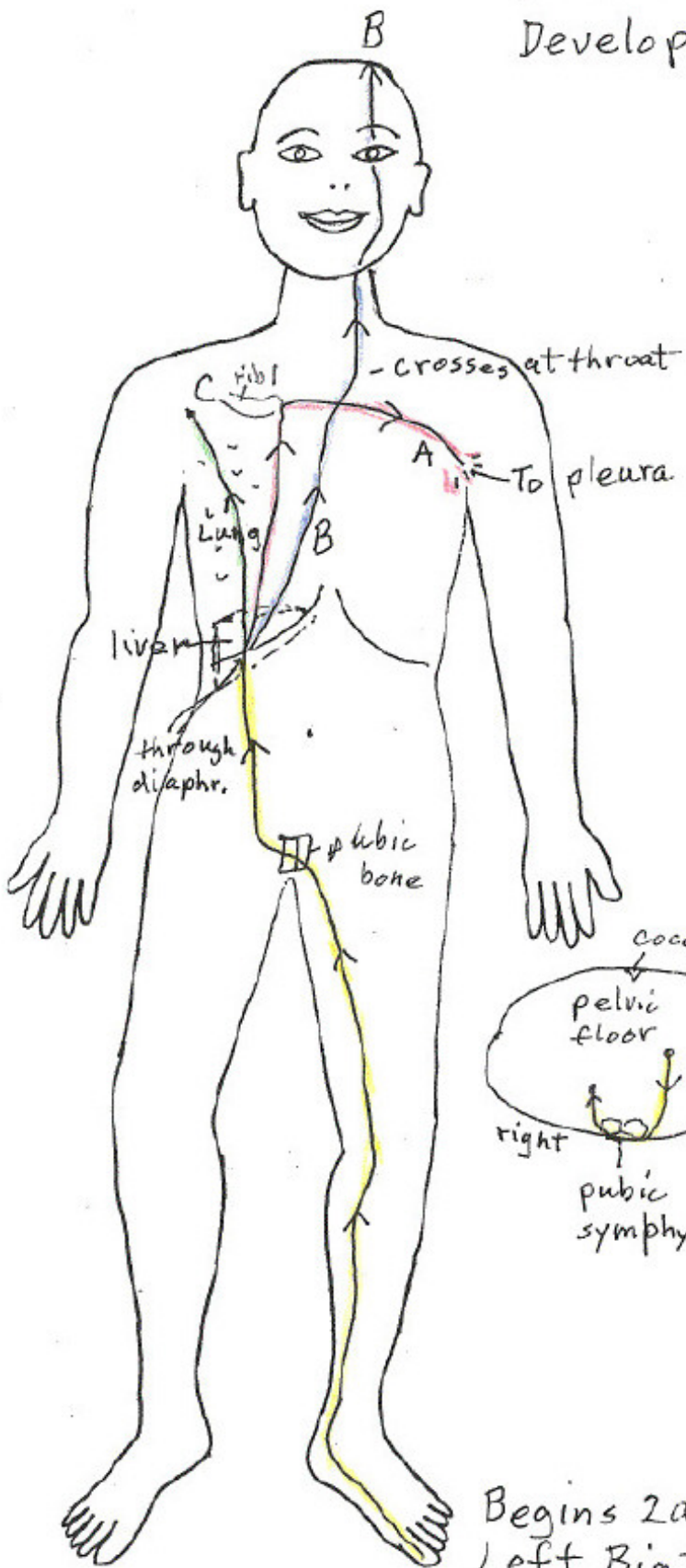


Left Liver Developing flow



Begins 2am
Left Big toe.

Betty J. Wall
Jan. 26, 2000

LEFT LIVER FUNCTION DEVELOPING ENERGY

At 2 AM the **left** Gall Bladder Developing Energy Flow arrived at the inside of the big toe changes into the **left** Liver Developing Energy Flow at the medial tip (inside) of the big toenail. Goes up the inside of the foot, by the inner ankle, through the inside of the back of the knee (between the bones and ligament), comes out to the inner thigh, goes underneath the groin (perineum), comes out to the front of the pubic bone where the left and right flows cross.

[Web That Has No Weaver: Beginning at top of big toe, traverses top/inner side of foot, ascending in front of the inner ankle & along medial aspect of leg. From the pubis symphysis it circulates the genitalia, crosses to opposite side and enters lower abdomen.]

The left flow ascends into right side of abdomen, by right inside of stomach and into liver. Passes through the diaphragm, and immediately separates into "A", "B" and "C", creating the energy that circulates in the lungs.

"A" ascends and turns at first front rib, crossing the sternum to the left underarm area and scatters and flows into the pleura. (Pleura – the serous membrane investing lungs and lining the thorax. Thorax - the chest; the part of the body between neck and abdomen. The liver energy is nurturing the fluid surrounding the lungs.)

"B" goes up the right chest, crosses at the manubrium to the left side of the throat and ascends throat, through the bottom of the eye, up to the head, deep into the brain. [The left heart flow enters the Cerebrum, merges with the liver flow to create the Cerebrum Flow (5th depth aiding 3rd depth). The Cerebrum Flow goes to the back top of the head, descends in front of the cervicals, into the neck, to the left side of the esophagus. The Cerebrum flow descending to stomach and liver flow ascending to the head, sandwich the esophagus. The Cerebrum flow disperses outside the left stomach. (Cerebrum Flow is also providing energy for developing lung function.) The liver flow changes into the Cerebrum Flow and the Lung Flow. The Cerebrum flow is illustrated and discussed as part of the liver flow.

"C" flows immediately into the right lung, energizing the inner lung. At the apex of the right lung (subclavian area), it becomes the right lung flow at 4 AM. ... [Web/No Weaver: lung meridian originates in the middle portion of the body cavity & runs downward, internally, to connect with the large intestine, then turns and passes upward through the diaphragm, etc.]

In the Order of Creation, the lung is the first organ to manifest. The first few rounds of energy come from 3rd depth unmanifested.

All the depths are participating in supporting the lungs, the sequence:

- (1) 3rd depth (liver) flows to the stomach (1st depth), surrounds it and changes into the lung flow.
- (2) One branch ("B") ascends to the head where it merges with the ("3") of heart flow (5th depth) and creates the Cerebrum Flow (6th depth). The cerebrum flow descends along the esophagus behind the sternum.
- (3) Recalling the Order of Creation, the bladder enters the Main Central at the center 13 (esophagus area) and the kidney enters Main Central at center 14 (stomach area), allowing 4th depth energy to participate with the descending cerebrum energy.
- (4) 3rd and 6th depth energy are continually changing into lung energy.
- (5) Also, one branch of the liver flow ("C") changes into the lung flow at the apex of the lung, 2nd depth.
- (6) Liver energy is supporting lung energy in three ways: liver to stomach, cerebrum to stomach, and another branch at the top of the lung changing into the pathway that ascends the arm.