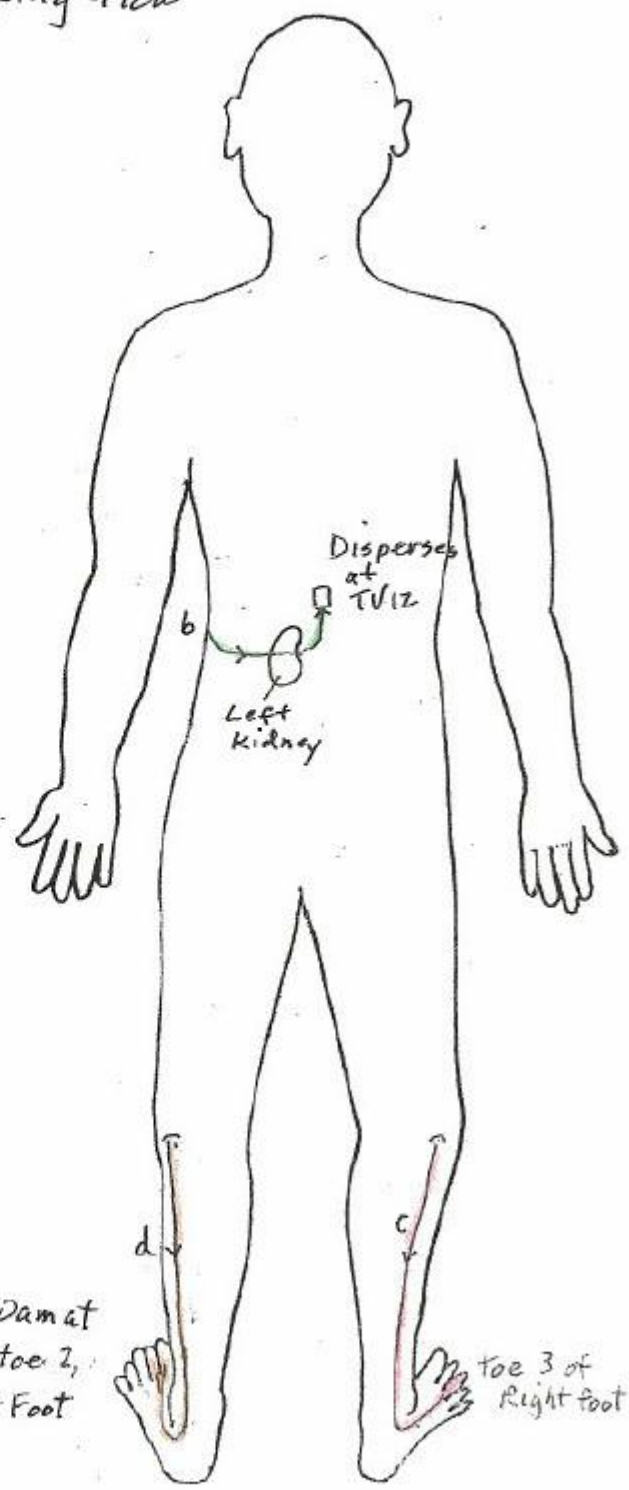
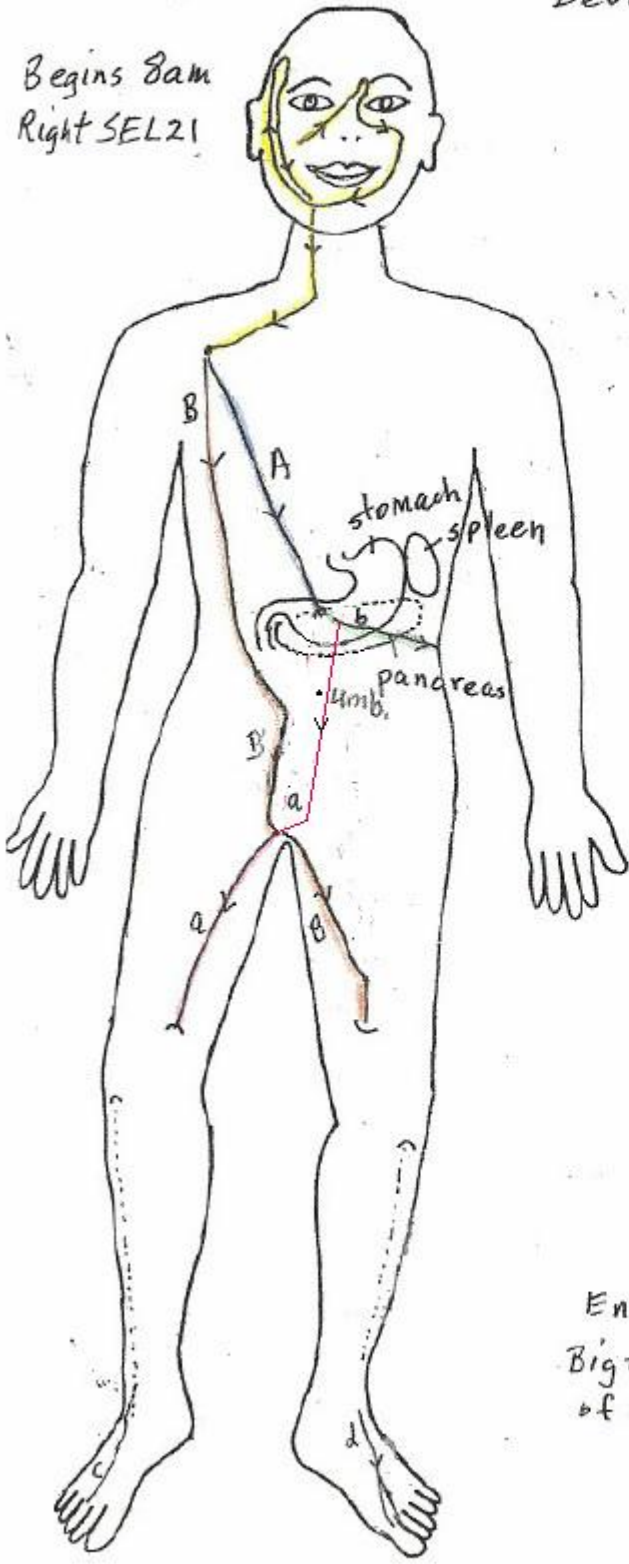


Right Stomach Developing flow

Begins 8am
Right SEL21



Ends 10am at
Big toe, toe 2,
of Left Foot

Toe 3 of
Right foot

Betty J. Wall
May 12, 2003

STOMACH DEVELOPING FLOW

At 8 a.m. at the right cheekbone SEL 21, the **right** Large Intestine Developing Flow changes into the **right** Stomach Developing Flow. From the right cheekbone it goes up to the center of the nose and crosses to slightly above the corner of the left eye, then flows down passing along left inner eye. Descends slightly out from the left side of nose passing through left 21, down to the center lower jaw at the chin, curves along the right jaw bone to the front of the right ear to just above right eye brow line, turns toward the right eye, descends, passing by the outer edge of the eye, across cheek, jaw, goes through the throat (right side of neck) to front of right subclavian (lateral 22) where it branches into "A" and "B".

"A" goes inward and directly to stomach where it divides into "a" and "b".

"A-a" flow descends on the left side of the abdominal mid-line, passing close to the umbilicus and continues to the perineum, to medial (inner side) right thigh to the lateral side of the knee and becomes "c".

"A-b" flows into the pancreas, left kidney and into the 12th thoracic and disperses.

"B" descends from the subclavian area (around the outer side of the right breast), through the gall bladder, into the abdomen and from about one inch from the side of the umbilicus continues down and crosses behind the pubic bone to the left inner thigh, to the lateral side of the knee. (Travels in close proximity, parallel with "Left stomach flow "A-a" down left lower leg.) "B" continues behind the knee cap and becomes "d" down the left lower leg.

"c" descends right lateral knee, slightly lateral of the shin bone, flowing across the top of the foot to the right middle toe.

"d" descends the left lower leg (more lateral than Left Stomach "c"), across the top of the foot to big and 2nd toes. It changes to the **left** Spleen Function Energy in the big toe at 10 AM.

(Note: According to The Web That Has No Weaver the stomach flow from cheek goes up body of nose & emerges under the eye. The main branch of the stomach flow in leg terminates in the second toe. Secondary branch in big toe becomes the spleen flow. An explanation as to why 2nd toe helps eyes.)