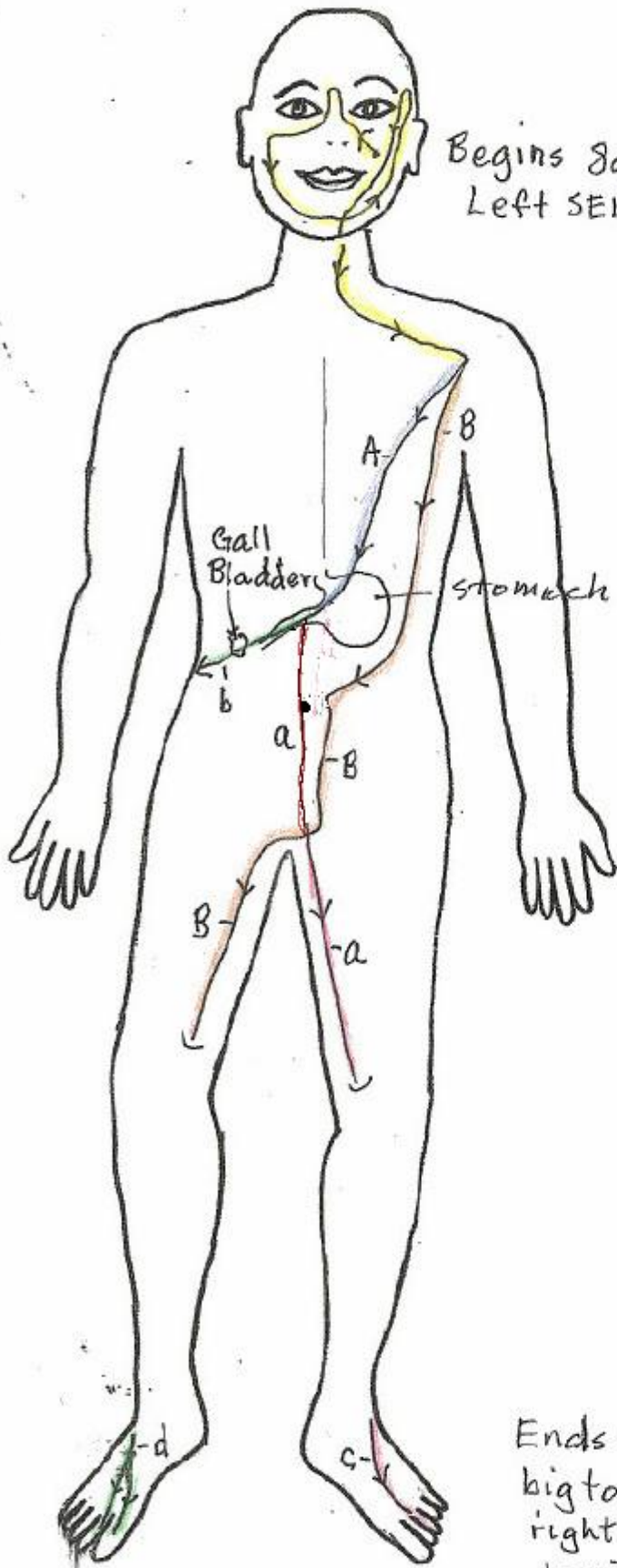
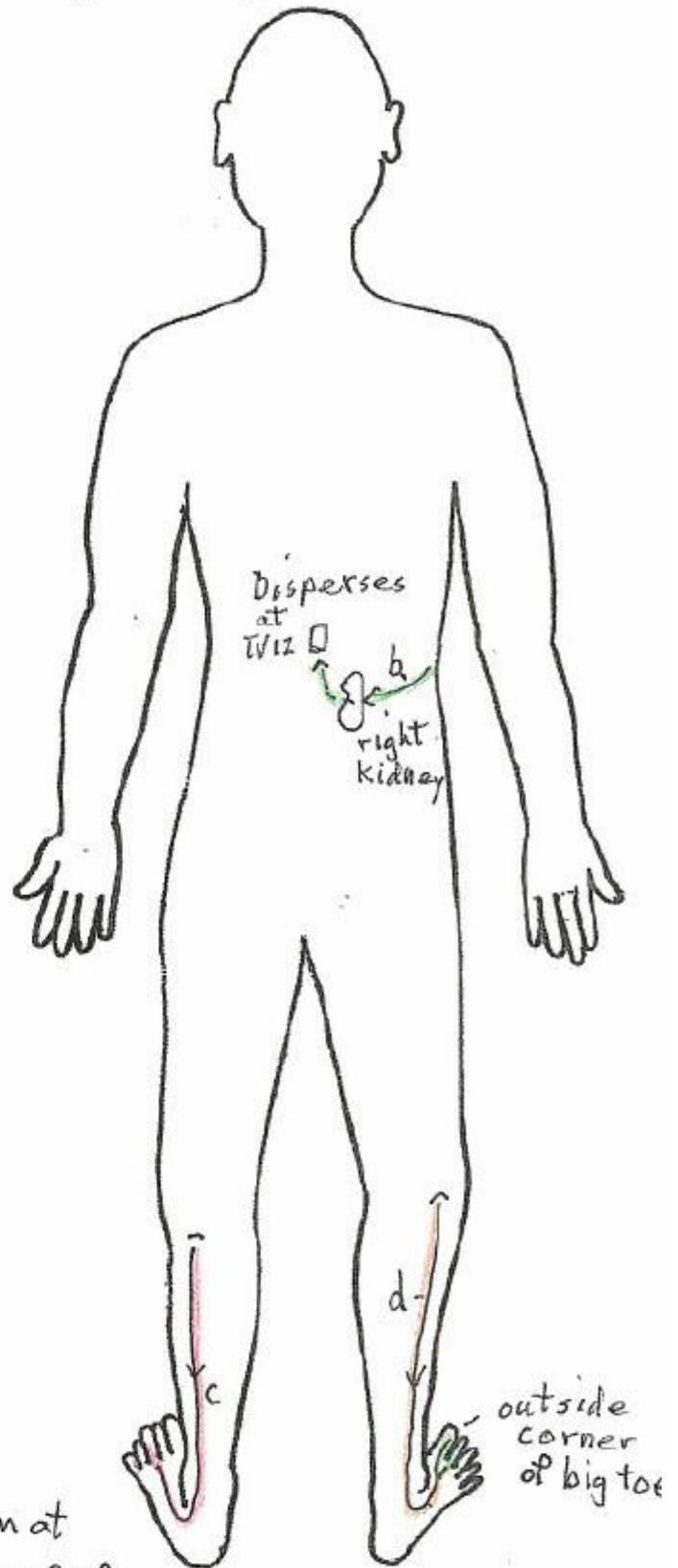


Left Stomach
Developing flow



Begins 8am
Left SEL#21

Gall Bladder
stomach



Disperses
at T12

right
Kidney

outside
corner
of big toe

Ends 10am at
big toe, toe 2 of
right foot and
toe 3 of left foot

Betty J. Wall
May 12, 2003

LEFT STOMACH DEVELOPING FLOW

At 8 a.m. at the left cheekbone, the **left** Large Intestine Developing Flow changes into the **left** Stomach Developing Flow. From the left cheekbone it goes up to the center of the nose and crosses to slightly above the corner of the right eye, then flows down passing along right inner eye. Descends slightly out from the right side of nose passing through right 21, down to the center lower jaw at the chin, curves along the left jaw bone to the front of the left ear to just above left eye brow line, turns toward the left eye, descends, passing by the outer edge of the eye, across cheek, jaw, goes through the throat (left side of neck) to front of left subclavian area (lateral 22) where it branches into "A" and "B".

"A" goes inward and directly to stomach where it divides into "a" and "b".

"A-a" descends on the right side of the abdominal mid-line, passing close to the umbilicus and continues to the perineum, to medial (inner side) left thigh to the lateral side of the knee.

"A-b" flows into the gall bladder, right kidney and into the 12th thoracic and disperses.

"B" descends from the subclavian area (around the outer side of the left breast), through the pancreas, into the abdomen and from about one inch from the side of the umbilicus continues down and crosses behind the pube to the right inner thigh, to the lateral side of the knee. (Travels in close proximity, parallel with Right Stomach flow "A-a" down right leg as "c".) "Left Stomach flow B" continues behind kneecap, down the lateral right lower leg as "d".

"c" descends left lateral knee, slightly lateral of the shin bone, flowing across the top of the foot to the left middle toe.

"d" descends the right knee (more lateral than Right Stomach "c"), across the top of the foot to big and 2nd toes. It changes to the **right** Spleen Function Energy in the big toe at 10 AM.

(Note: According to The Web That Has No Weaver the stomach flow from cheek goes up body of nose & emerges under the eye. The main branch of the stomach flow in leg terminates in the second toe. Secondary branch in big toe becomes the spleen flow. An explanation as to why 2nd toe helps eyes.)